



PDR IR-C3 Chipmate Rework Station

*Low Cost, High Quality BGA/CSP
Rework on small PCBs*





Advanced Features

- Focused IR component heating
PDR's patented tool-free IR technology
- IR PCB Preheater
240mm x 240mm, 2000w system
Optional 750w or 1600w system
- Digital Control Package
With PDR Real Time Temperature Control
- Non-Contact IR Sensor
For Measuring Component Temperature
- Optional Professional PCB Sensor
K-Type PCB Temperature Measurement

Major Advantages

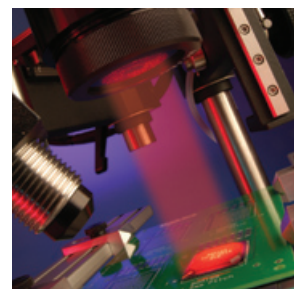
- No nozzles, focus hoods or shields
Any shape or size component covered
- Low cost of ownership
Nearly zero follow-on costs
- Precise, focused component heating
IR, with no effect on adjacent components
- Excellent process control
Professional Preheat-Reflow-Soak soldering process
- Easy to set up and use
Clean, simple, 100% yield process

Low Cost, Upgradeable BGA Rework System

Today there is a need for lower cost and upgradeable equipment without a loss in soldering quality. The PDR IR-C3 Chipmate SMT/BGA rework system, using PDR's patented Focused IR technology, has been specifically designed to meet this challenge.

The IR-C3 Chipmate comes with a good range of standard features allowing the operator to quickly, safely rework all types of components.

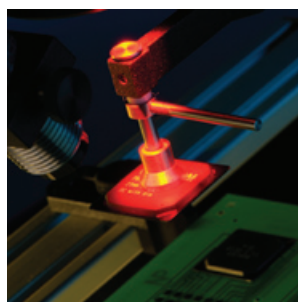
The system is tool free, gas free, instantly/precisely controllable, clean, modular and produces 100% yield BGA rework without any complications. The IR-C2 uses all the proven attributes of PDR's Focused IR technology, first introduced in 1987 and now used worldwide by over 3500 customers.



Simple BGA rework procedure

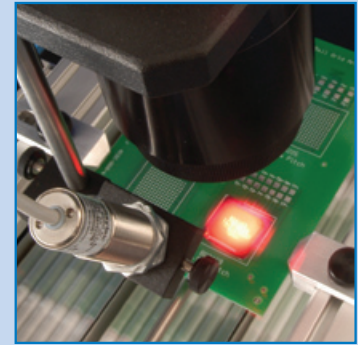
BGA rework poses the problem of accessing hidden interconnects in a high density environment. Consequently, it requires a system that is able to access the hidden joints without affecting neighbouring components. A system that is safe, gentle, adaptable and, above all, simple to operate.

The IR-C3 Chipmate is such a system. It is so easy to operate that technicians are able to instantly achieve excellent process control for BGA/SMT rework without the complexities and frustrations normally associated with 'high end' rework systems.



The IR-C3's standard features, with the use of simple aids, operators can simply pick up the BGA, align it, place it into fluxed pads and reflow with the system's accurate closed-loop component temperature control.

Detailed features and specifications



- **Advanced Focused IR Component Heating**
 Lens Based Focused IR heating with adjustable image system
 PDR lens attachments with IR image from 4 to 70mm diameter
 Reworks all SMDs/ BGAs including 0201s + lead free applications
- **IR PCB Preheater System**
 Medium wave IR PCB preheating
 2000W power - Single zone (240mm x 240mm area)
 Optional 750w system - Single zone (120mm x 120mm area)
 Optional 1600w system - Single zone (240mm x 240mm area)
- **PDR Lens Attachments**
 F150 (4 -18mm spotsize) optional
 F200 (10 -28mm “) optional
 F400 (12 -35mm “) optional
 F700 (25 -70mm “) standard
- **450mm Portable benchtop mounted PCB Workholder**
 Up to 12” X 10” (300mm X 250mm) capacity
- **Non-contact, IR Sensor for measuring component temperature**
 Manually adjustable, K-type non-contact IR sensor
 Realtime monitoring of component temperature throughout process
- **Digital, Closed-loop Electronic Control**
 Type 9, digital programmable controller (20 internal profile storage)
 Simple key pad setting power/time/temperature controls
 2 Channel component and pcb temperature control
- **Hand Held Vacuum Pick-up System**
 Vacuum operated pick up tool, hand held with silicon cups
- **(Standard) K-type wire thermocouple for measuring PCB temperature**
- **(Optional) professional K-type probe for measuring PCB temperature**
 Realtime monitoring of PCB and component temperatures throughout process

Benchtop Requirements

Topheat power	- 150 watts IR
Backheater power	- Upto 2000 watts IR
Voltage/frequency	- 220/240 volts 50/60Hz
Typical components	- CSPs, BGAs, micro-BGAs, QFPs, PLCCs, SOICs, small SMDs
Bench area required	- 900mm x 600mm
Weight	- 35 Kg

PDR

PDR - Design and Manufacturing

Unit 3 Stanley Centre, Kelvin Way Crawley, West Sussex, RH10 9SE, England

T: +44 (0)1293 614 000 F: +44 (0)1293 613 600 E: sales@pdr.co.uk

PDR America

3869 Dividend Drive, Shingle Springs, CA 95682, USA

T: (530) 676 6262 F: (530) 676 6265 E: sales@pdr-america.com

PDR's products are available worldwide via our international distributors, all offering professional sales and support.
For contact, product and company details please visit www.pdr-rework.com



www.pdr-rework.com